

SLEIPNIR



Multifunctional remotely controlled mobile platform for 3D SBP surveys

High positioning accuracy
Accommodation of a wide range of equipment

Working depth rating from 1 to 3000 m

GENERAL SPECIFICATIONS

Type	Electric, hybrid class
Operating depth rating	3000 m
Dimensions (L/W/H)	3300 x 5500 x 2000 mm
Weight	600 kg
Payload	100 kg
Thrusters	4 x Bottom Runner 4500
Full speed	0.5 m/s

CAMERAS AND LIGHTS

Type and number of cameras	1 x Full HD
Lights type	LED
Number of lights	2 x 72 W
Tilt-and-pan unit	1 x PU-20

EQUIPMENT AND SENSORS

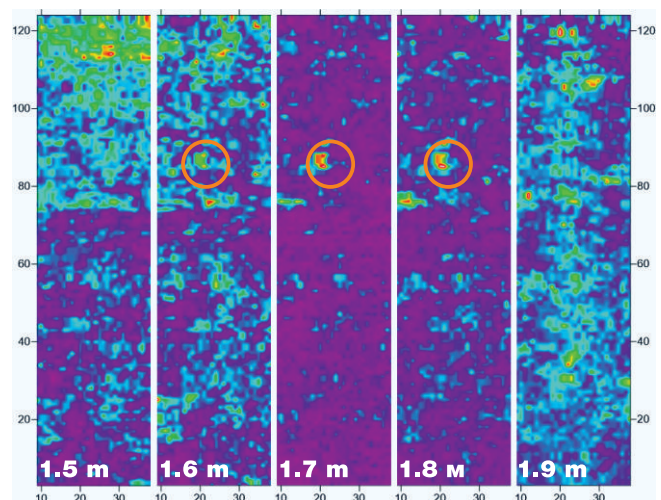
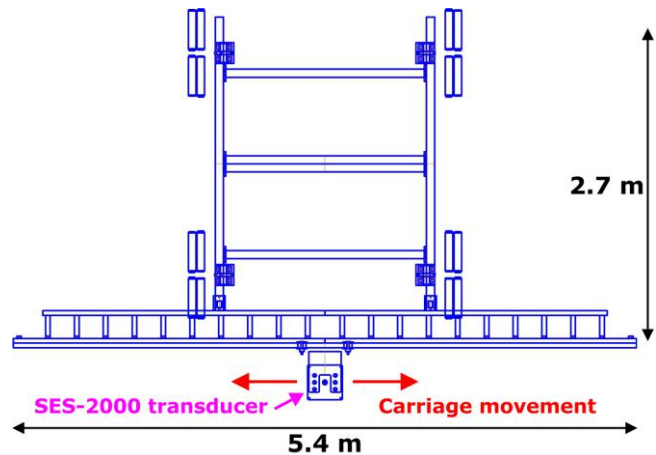
Parametric profiler 2-16 kHz
Heading, roll & pitch sensor
Scanning sonar
4 ports for connecting RS-232/485 12/24/220V

POWER SUPPLY

Shipboard part	380 V, 50 Hz, 12 kW
Subsea part	3000 V, 400 Hz, 10 kW

WINCH

Dimensions (W/L/H)	860 x 980 x 740 mm
Winch drum capacity	500 m @ 10 mm
Weight without cable	150 kg
Outer layer speed	1 m/s
Power supply	380 V, 50 Hz, 3-phase, 4 kW



Ask Subsea Ltd.
Malta, Gzira
114, The Strand, GZR1027

E-mail: ash@asksubsea.com
Web: www.asksubsea.com